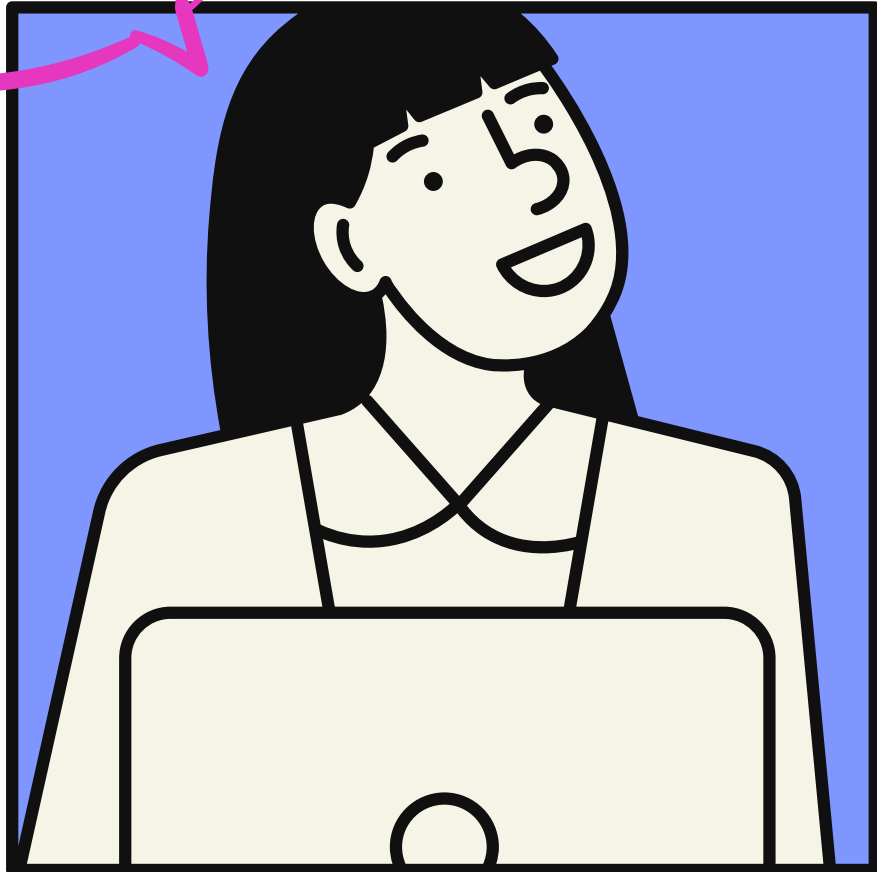
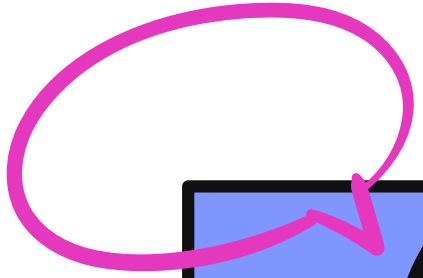




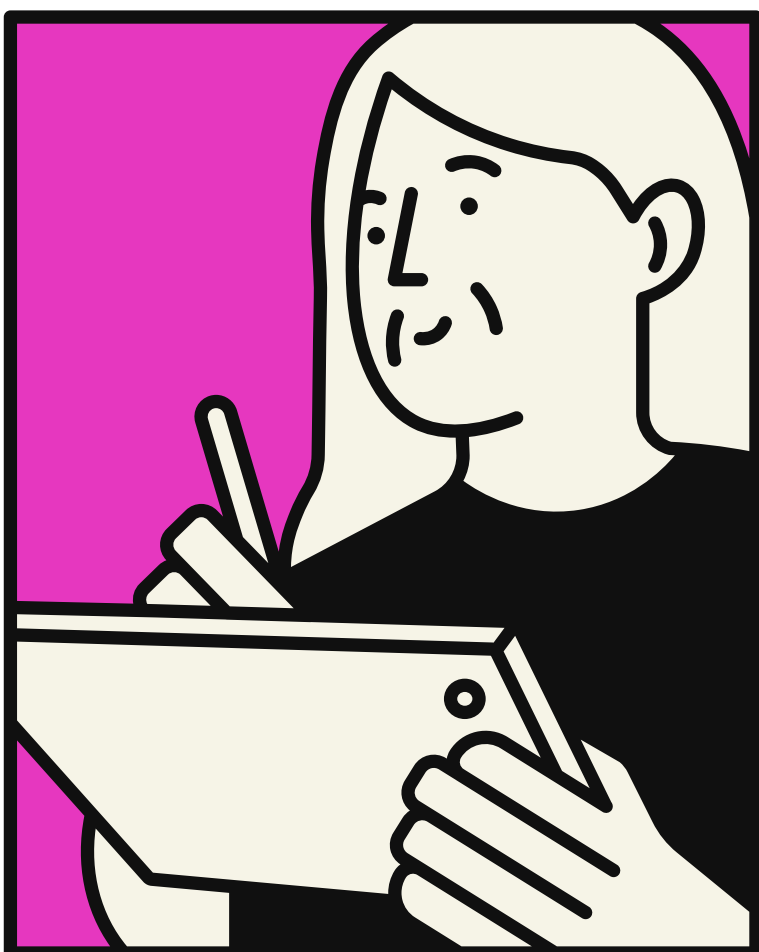
HATFIELD ZONING SURVEY



★ **RESPONDENTS ELIGIBLE
TO ENTER A RAFFLE FOR A
\$25 GIFT CARD** ★



Unable to attend in-person meetings to talk about housing in Hatfield, but still want to participate? Use the QR code on this flyer to contribute to existing scenario planning work and let your voice be heard! This website explains how a previous workshop & mapping activity has identified some future zoning strategies for Hatfield. Reviewing the website and completing the survey should take around half an hour and is best completed on a larger screen. Participants must be at least 18 years old!



The linked website is published by UMass affiliates in partnership with the Lincoln Institute of Land Policy. Information collected from the survey will be shared with the Town of Hatfield and used for research.