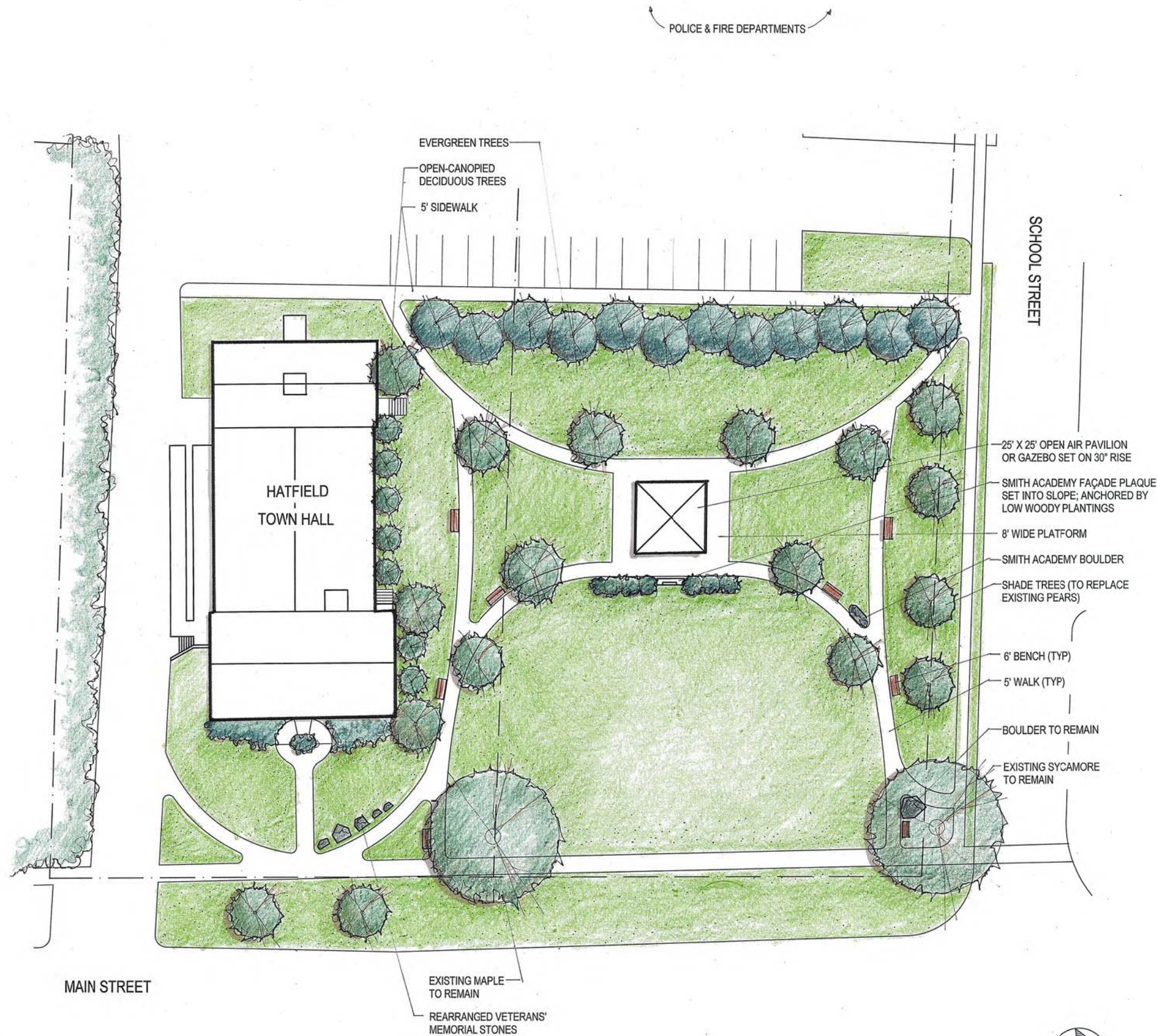


NOTES

Existing conditions information based on a site plan prepared in 2013 by the Town of Hatfield, Massachusetts Open Space Committee, and field-adjusted in June of 2014 by Martha Lyon Landscape Architecture, LLC. Martha Lyon Landscape Architecture, LLC makes no claim as to the accuracy of the information found on the 2013 plan.

DESIGN FEATURES

- Overall circulation pattern reflecting 1888-1889 lithograph of Smith Academy Park site
- 25' x 25' bandstand or pavilion set on slight rise (30") at geographic center of park with Smith Academy building frieze incorporated into structure/setting and anchored by low plantings (woody)
- 8' wide pavement surrounding bandstand/pavilion to accommodate gatherings
- Smith Academy site boulder maintained in approximately the same location; integrated into the pathway system
- New planting of shade trees (4) along north side to replace existing pear trees
- Screening of evergreen trees along west side (parking lot area)
- Open-canopied deciduous trees planted along the south edge (adjacent to Town Hall)
- 5' wide walkways throughout



TOWN of HATFIELD
59 Main Street

SMITH ACADEMY PARK LANDSCAPE REHABILITATION

Hatfield, Massachusetts

MARTHA LYON
Landscape Architecture, LLC

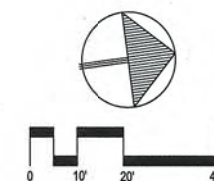
313 Elm Street
Northampton, MA 01060
p: 413-586-4178
f: 413-584-6697
www.marthalyon.com

135

DECEMBER 4, 2014

As Shown

CONCEPT
PLAN



Drawing No.